

# Shared Service Centers

Communication Ambassadors Meeting

August 15, 2013



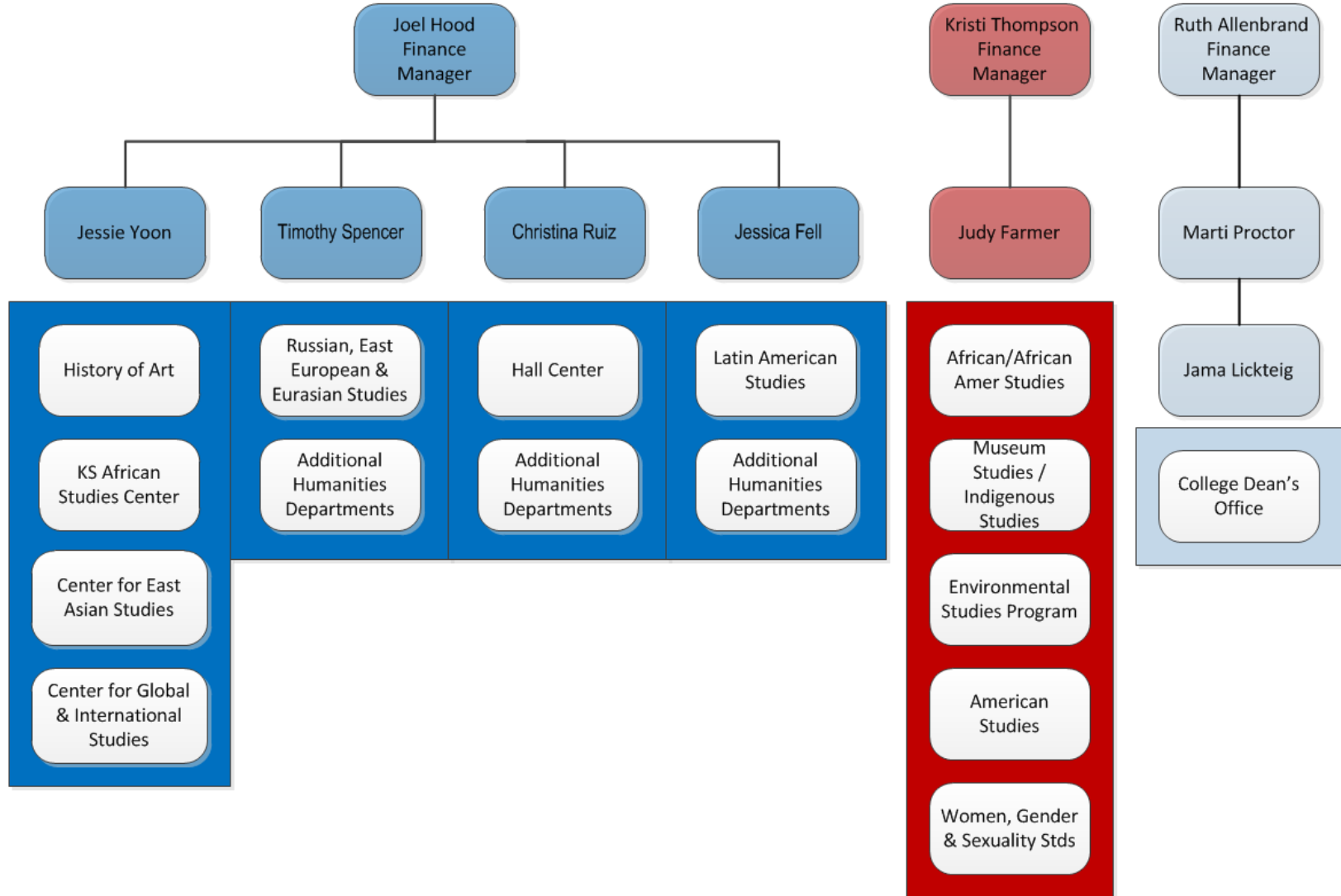
# Today's Discussion

- Overall LAS-SSC Update
- LAS: International and Interdisciplinary Studies, Hall Center, SPAA, College Dean's Office (Wave 3)
- LAS: Natural Sciences and Mathematics Update (Wave 4)
- Life Span SSC
- Campus Administration & Operations SSC

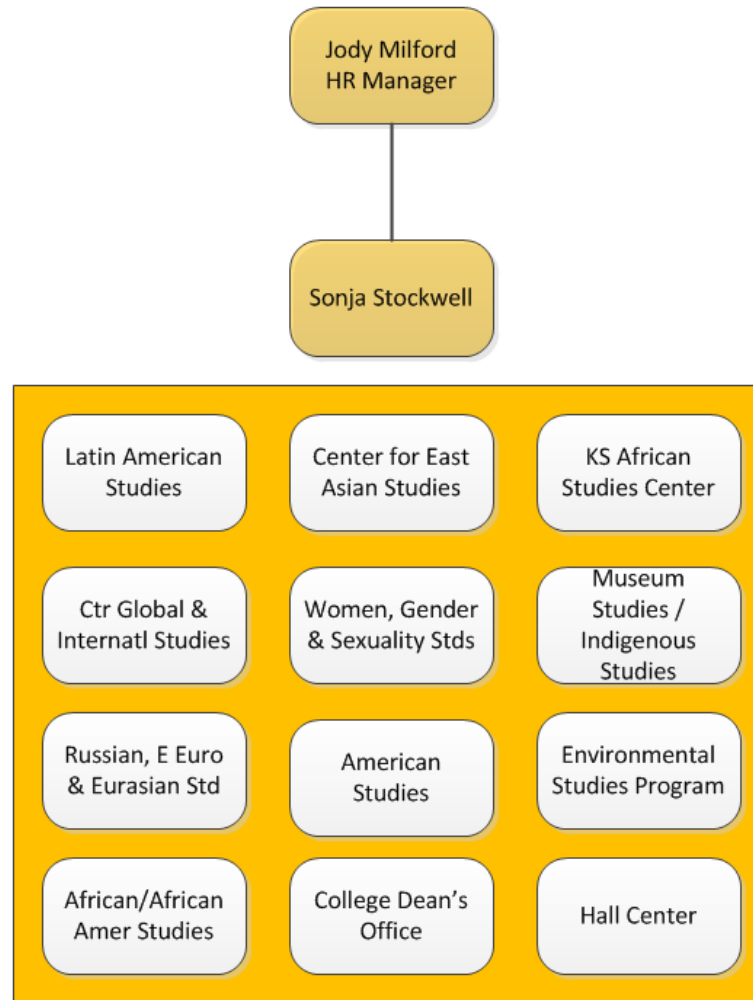
# Overall LAS-SSC Update

- Social and Behavioral Sciences went live July 1<sup>st</sup>
- International and Interdisciplinary Studies, Hall Center, College Dean's Office, and School of Public Affairs & Administration went live August 12<sup>th</sup>
- Currently have 24 staff in the LAS-SSC (out of 37 total)
- All 5 managers are on board

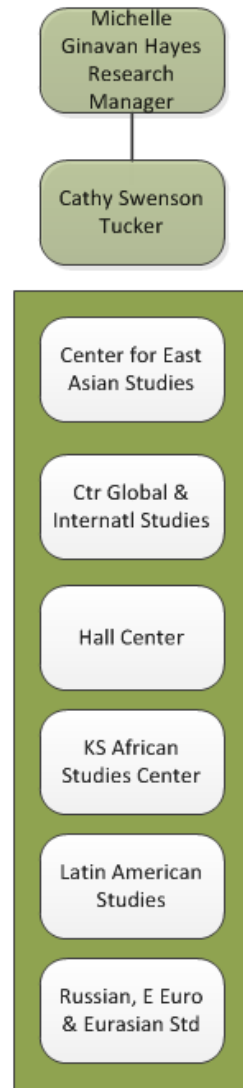
# LAS-SSC: Wave 3 Assignments – Finance



# LAS-SSC: Wave 3 Assignments - HR



# LAS-SSC: Wave 3 Assignments - Research



# LAS-SSC: Natural Sciences and Math (Wave 4)

- Beth Benfield, Research (from Chemistry)
- Jan Akers, Finance (from Chemistry)
- Rick Huettenmueller, Finance (from Chemistry)
- Kim Booth, Finance (from Ecology & Evolutionary Biology)
- Ramia Whitecotton, Research (from Geography)
- Liz Gravatt, Finance (from Geology)
- Maria Swinger-Inskeep, Finance (from Geology)
- Debra Garcia, HR (from Mathematics)
- Cynthia Rodriguez, Research (from Molecular Biosciences)
- Pam Sanchez, HR (from Molecular Biosciences)
- Doug Fay, Finance (from Physics)
- Sharon Green, Finance (from Undergraduate Biology)
- Vacant Grant Monitor: will post in late October

# Life Span SSC: Status Update

- Director position posted (closes August 23<sup>rd</sup>)
- Renaming the Life Span SSC
- Process modifications required
- Potential Size



# Administration & Operations SSC: Status Update

- SSC Model change - combining Administration and Operations into one SSC
- Director position posted (closes August 23<sup>rd</sup>)
- Potential Size

# Shared Service Center Model for KU

<p><b>Biosciences SSC</b></p> <p>Bioengineering Research Center (BERC)</p> <p>Higuchi Biosciences Center (HBC)</p>	<p><b>Life Span SSC</b></p> <p>Juniper Gardens Children's Project</p> <p>Kansas Intellectual and Developmental Disabilities Research Center</p> <p>Kansas University Center on Developmental Disabilities</p> <p>The Research and Training Center on Independent Living</p> <p>Child Language Doctoral Program</p> <p>Beach Center on Disability</p> <p>Gerontology Center</p> <p>The Merrill Advanced Studies Center</p> <p>Work Group for Community Health and Development</p> <p>Center for Physical Activity and Weight Management</p> <p>Biobehavioral Neurosciences in Communication Disorders Center</p> <p>The Kansas Center for Autism Research</p> <p>Institute for Policy and Social Research (IPSR)</p>	<p><b>Campus Administration &amp; Operations SSC</b></p> <p>Administration &amp; Finance</p> <p>Business &amp; Financial Planning</p> <p>Office of the Provost</p> <p>Office of the Chancellor</p> <p>International Programs</p> <p>Student Services</p> <p>Public Affairs</p> <p>Information Technology</p> <p>Facilities Services</p> <p>Sustainability</p> <p>Purchasing</p> <p>Design &amp; Construction Management</p> <p>Parking &amp; Transit</p> <p>Environmental Health &amp; Safety</p> <p>Continuing Education</p> <p>University Press</p> <p>Research &amp; Graduate Studies</p> <p><i>Satellite Center</i></p> <p>Edwards Campus</p>	<p><b>Education, Journalism &amp; Social Welfare SSC</b></p> <p>School of Education</p> <p>School of Journalism</p> <p>School of Social Welfare</p> <p>Center for Research on Learning (CRL)</p> <p>Achievement and Assessment Institute (AAI)</p>
<p><b>Technology, Climate &amp; Energy SSC</b></p> <p>Information &amp; Telecommunication Technology Center (ITTC)</p> <p>Biodiversity Research Institute (BI)</p> <p>Center for Environmental Beneficial Catalysis (CEBC)</p> <p>Transportation Research Institute (TRI)</p> <p>Tertiary Oil Recovery Project (TORP)</p> <p>Center for Remote Sensing of Ice Sheets (CRISIS)</p> <p>KS Biological Survey (KBS)</p> <p>KS Geological Survey (KGS)</p>			<p><b>Music, Architecture, Law &amp; Libraries SSC</b></p> <p>School of Music</p> <p>School of Architecture</p> <p>School of Law</p> <p>Libraries</p>
			<p><b>Business, Engineering &amp; Pharmacy SSC</b></p> <p>School of Business</p> <p>School of Engineering</p> <p>School of Pharmacy</p>
			<p><b>Liberal Arts &amp; Sciences SSC</b></p> <p>College of Liberal Arts and Sciences</p> <p>Hall Center for the Humanities</p>

Note: PIs can opt to align with a research SSC or an academic SSC.

# Resources

Please let others know that we are interested in hearing what they have to say!

- Next meeting: September 26<sup>th</sup> at 1:30 PM in Alderson Auditorium, Kansas Union
- CFE website [www.cfe.ku.edu/ssc/](http://www.cfe.ku.edu/ssc/)
- SSC website [www.ssc.ku.edu](http://www.ssc.ku.edu)
- Follow-up contacts:
  - Jason Hornberger: [jfh@ku.edu](mailto:jfh@ku.edu)
  - Nick Stevens: [nickstevens@ku.edu](mailto:nickstevens@ku.edu)
  - Karla Williams: [kkw@ku.edu](mailto:kkw@ku.edu)