

Shared Service Centers

Communication Ambassadors Meeting

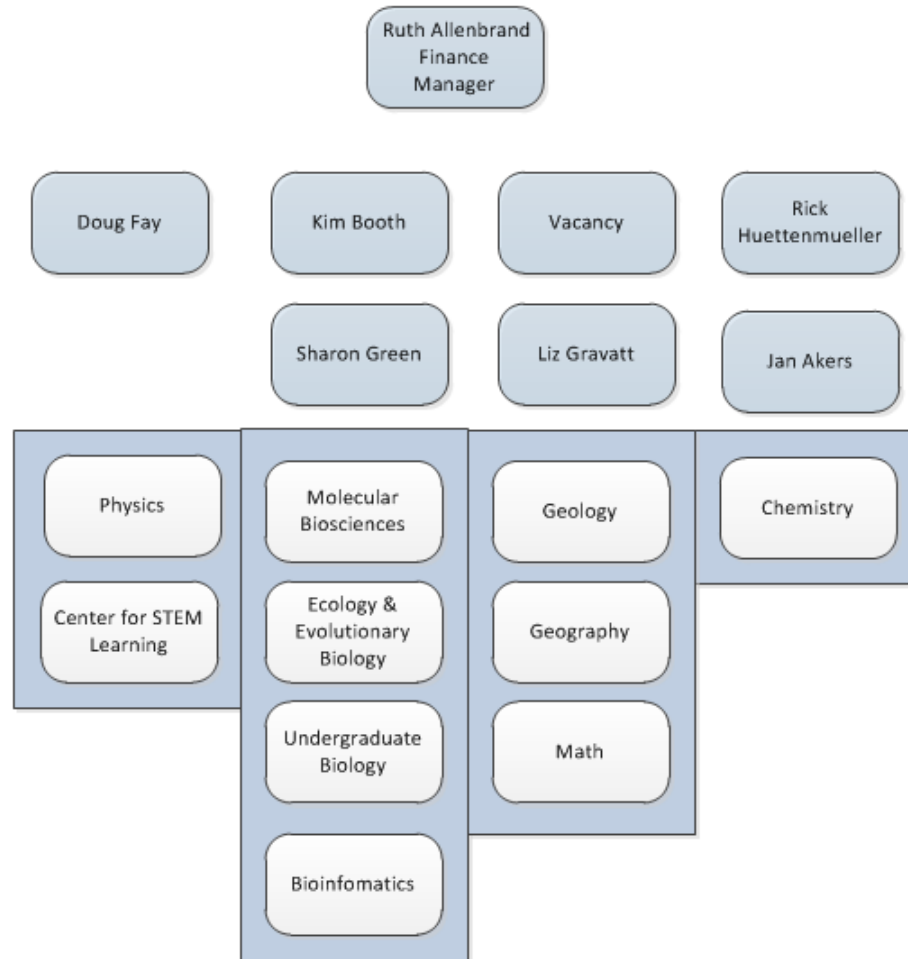
October 24, 2013



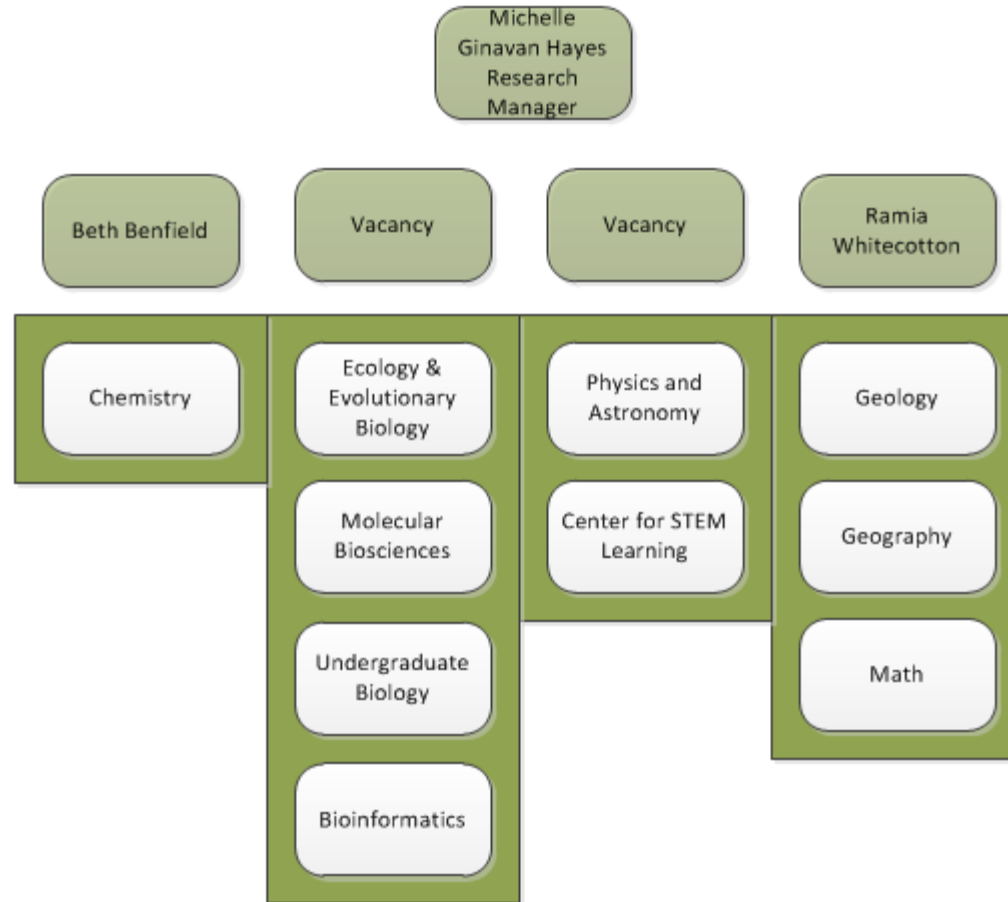
Agenda

- LAS-SSC Update: Natural Sciences and Math (Wave 4)
- Changing staff assignments: Area Centers
- Biobehavioral and Social Research - SSC Update
- Campus Adm/Operations - SSC Update
- Updated SSC Implementation Timeline
- BudCast Update
- SSC Accountability

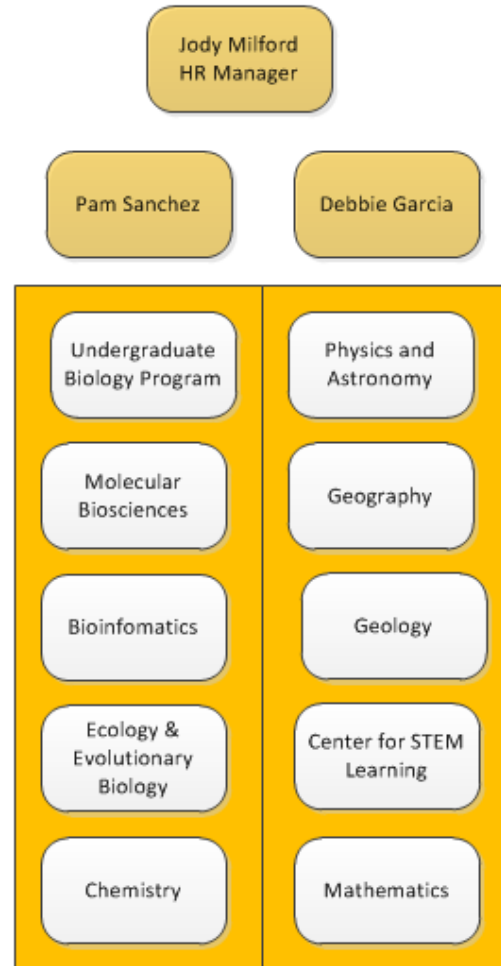
Wave 4 Assignments - Finance



Wave 4 Assignments - Research

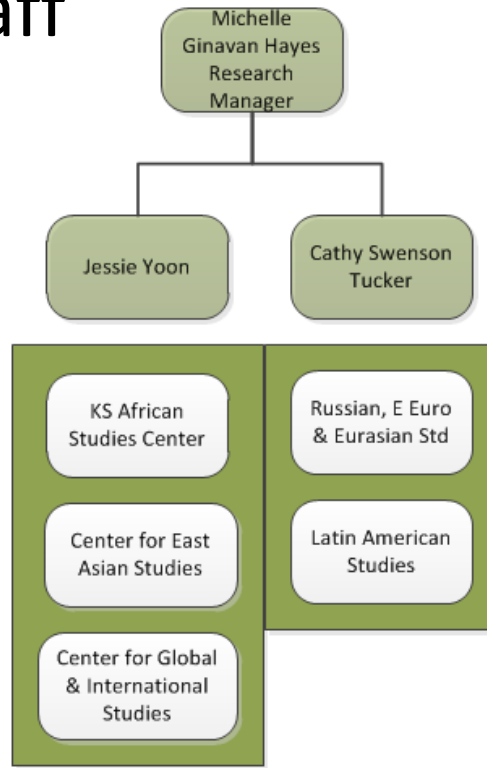


Wave 4 Assignments - HR



Wave 3 Changes

- Realigned SSC staff to better integrate with area center staff



BSR-SSC


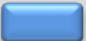

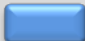

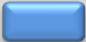





- Officially renamed: Biobehavioral and Social Research SSC
- Cindy Nau hired as the Director: starts October 28th.
- Development of implementation plan
- Location: Dole Human Development Center (inside the Life Span Institute)

Campus Admin/Operations SSC

- Initial interviews for the director will be completed this week.
- Location: 3rd Floor of Carruth-O'Leary

SSC Implementation Timeline (Revised)

As implementation progresses, the campus plan and implementation schedule will be reassessed.

	FY13		FY14				FY15			
	Q3	Q4	Q1	Q2	Q3	Q4	Q1	Q2	Q3	Q4
Initial Site: Liberal Arts & Sciences SSC										
Wave 1: Humanities, Arts, Honors										
Wave 2: Social & Behavioral Sciences										
Wave 3: International and Inter. Disciplinary										
Wave 4: Natural Sciences & Math										
Campus Rollout										
Biobehavioral & Social Research SSC										
Biosciences SSC										
Campus Administration & Operations SSC										
Music, Architecture, Law & Libraries SSC										
Business, Engineering & Pharmacy SSC										
Education, Journalism & Social Welfare SSC										
Technology, Climate & Energy SSC										

BudCast Update

- SSC is partnering with Budget Office
- Fund Management Report
- Projection Report
- Status of Grant Reports

Accountability

- Metrics
- LAS Advisory Board
- CLAS Chair & Director Meetings

Resources

Please let others know that we are interested in hearing what they have to say!

- Next meeting: November 21st at 1:30 PM in Alderson Auditorium, Kansas Union
- CFE website www.cfe.ku.edu/ssc/
- SSC website www.ssc.ku.edu
- Follow-up contacts:
 - Jason Hornberger: jfh@ku.edu
 - Nick Stevens: nickstevens@ku.edu
 - Karla Williams: kkw@ku.edu